



# HT-B(NL) TAPENER

## INSTRUCTION MANUAL



**BEFORE USING THIS TOOL, STUDY THIS MANUAL TO ENSURE SAFETY WARNING AND INSTRUCTIONS.**  
**KEEP THESE INSTRUCTIONS WITH THE TOOL FOR FUTURE REFERENCE.**

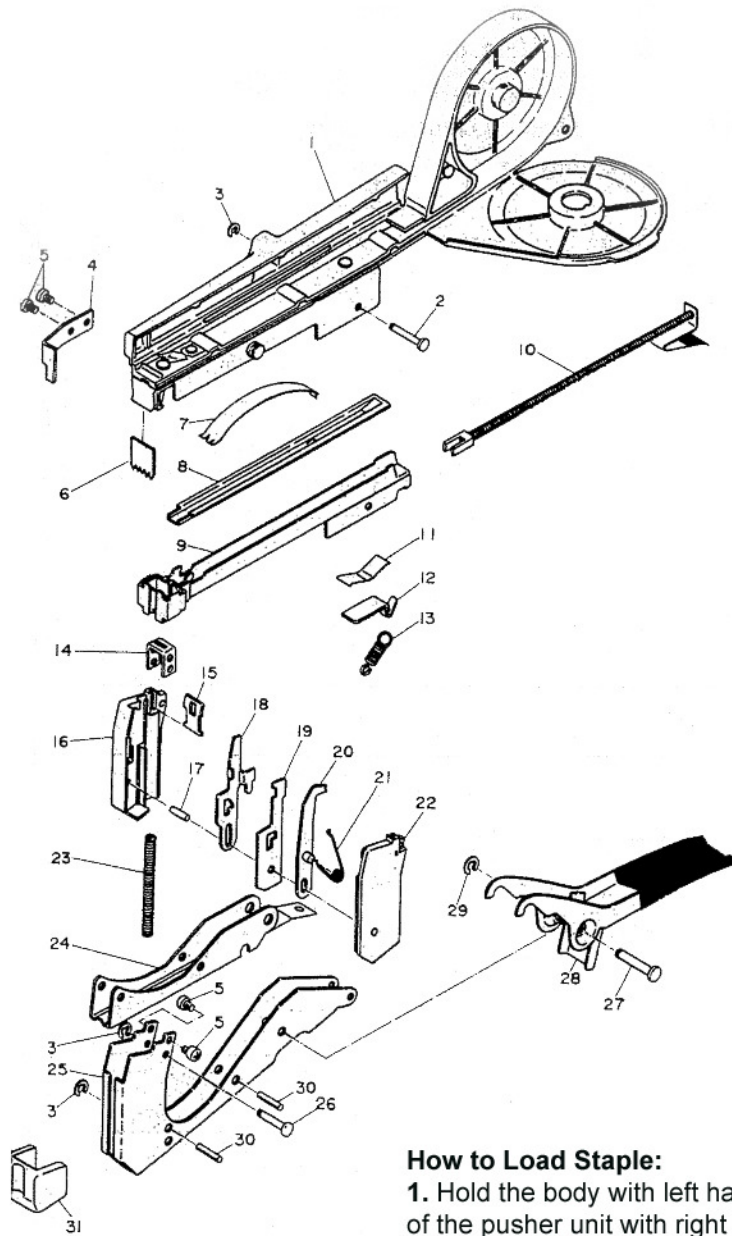
### SPECIFICATIONS

Name:	MAX-TAPENER Model HT-B (NL)/ML
Dimensions:	158mm HX29mm WX342mm L
Staples Used: Punti usati: Agrafes utilizadas: Verwendbare Klammern: Grapas utilizadas:	MAX STAPLES 604C-L (4,800 PCS.) MAX STAPLES 604E-L (4,800 PCS.)
Number of Staples Loaded: Numero di punti caricabili: Nombre d'agrafes emmagasinées: Ladepazität: Número de la grapas cargadas:	MAX STAPLES 604C-L 200 pcs. (2 strips of staples) MAX STAPLES 604E-L 172 pcs. (1 strip of staples)
Tape Used: Nastro usato: Bande utilisée: Bandtypen: Cinta utilizada:	MAX TAPE-10, 0.1mmTX11mmWX40ML (White) MAX TAPE-15, 0.15mmTX11mmWX26ML (Blue) MAX TAPE-25, 0.25mmTX11mmWX16ML (Red)
Weight:	510 grams
Bundling Limit: Limiti di fasciatura: Limite de liage: Bündelfähigkeit: Tamaño de atadura:	Maximum 45mm $\phi$ Xparallel 20mm $\phi$
Blade: Lama: Lame: Klinge: Cuchilla:	MAX Tapener Serrated Blades (Part No. TC90017)
Staple's Full-Scale Figure (mm)	

### PARTS LIST

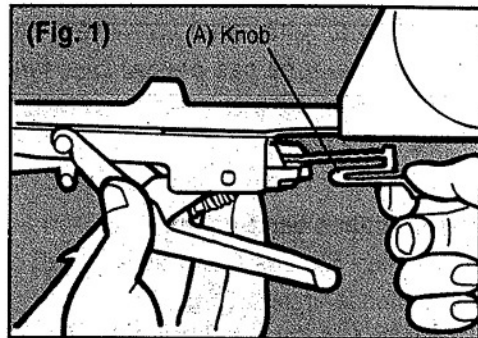
Index No.	Parts Code No.	Description
1	HT70005	A-Type Handle Unit
2	FF41229	Stap Pin 1229
★ 3	JJ10104	E-Type Retaining Ring 2.3
4	HT10066	Rod Holder
★ 5	AA21102	Plus Pan Head Machine Scwer 3X4
★ 6	TC90017	Serrated Blades
★ 7	KK51011	Leaf Spring 1011
★ 8	HT10025	Staple Cover
9	HT70020	Magazine Unit
★ 10	HT10027	Pusher Unit
★ 11	KK51012	Leaf Spring 1012
★ 12	HT10026	Hook
★ 13	KK13001	Tension Spring 3001
★ 14	HT10013	Clincher
15	HT11202	Support Plate

★ Parts interchangeable with Model HT-A

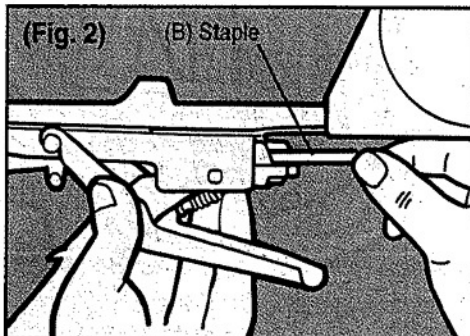


**How to Load Staple:**

1. Hold the body with left hand, push up the knob (A) of the pusher unit with right hand, and pull it out backwards Fig.1).



2. Pick up the staples (B) with right hand and load them into the magazine unit with the staple legs pointing downward. then set them in the pusher unit. You can load 200 staples of 640C type or 150 staples of 604E (Fig.2).



Index No.	Parts Code No.	Description
16	HT10052	A-Type Case
17	FF30103	Straight Pin 103
18	HT11205	Push Rod
19	HT11206	Clutch Plate
20	HT70004	Tape Catch Unit
21	KK33003	Torsion Coil Spring 3003
22	HT10053	B-Type Case
23	KK23006	Compression Spring 3006
24	HT11247	Cover
25	HT10051	Clincher Arm
26	FF41221	Step Pin1221
27	FF41228	Straight Pin 1228
28	HT70042	B-Type Handle Unit
★29	JJ10103	E-Type Retaining Ring 3.2
30	FF21220	Spring Pin 3X16
31	HT70021	Protector Unit